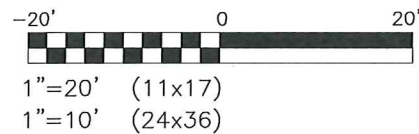
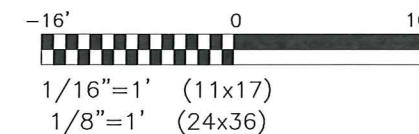


SITE ELEVATION

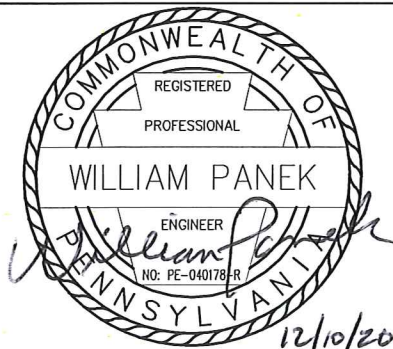


STRUCTURAL NOTE:
 A STRUCTURAL ANALYSIS SHALL BE COMPLETED PRIOR TO SUBMITTAL FOR BUILDING PERMIT. CONTRACTOR SHALL BE GIVEN THIS DOCUMENT FOR REFERENCE PRIOR TO THE START OF CONSTRUCTION.

COMPOUND PLAN



CALLED NORTH



velocitel, llc
 complete wireless solutions
 200 NORTH WARNER ROAD SUITE #215
 KING OF PRUSSIA, PA 19406
 610-992-4101 (MAIN)
 610-992-4109 (FAX)

at&t MOBILITY
 200 NORTH WARNER ROAD
 KING OF PRUSSIA, PA 19406

SITE NO. PAL01345
 UNIONVILLE PA
 FA# 10141548
 940 UNIONVILLE WAWASET ROAD
 KENNETT SQUARE, PA. 19348

3	12/03/20	ISSUED FOR ZONING	DMT	DK	BP
2	11/23/20	ISSUED FOR ZONING	DMT	DK	BP
1	07/16/20	ISSUED FOR ZONING	DMT	DK	BP
0	02/27/20	ISSUED FOR ZONING	DMT	DK	BP
B	02/25/20	ISSUED FOR REVIEW	DMT	DK	BP
NO	DATE	REVISIONS	BY	CHK	APP'D
SCALE:		DESIGNED:	CHECKED: --		

SITE ELEVATION & COMPOUND PLAN

FA #	DRAWING NUMBER	REV
10141548	Z3	3

IT IS A VIOLATION OF LAW FOR ANY PERSON UNLESS THEY ARE ACTING UNDER THE DIRECTION OF A LICENSED PROFESSIONAL ENGINEER TO ALTER THIS DOCUMENT UNLESS EXPLICITLY AGREED TO BY THE ENGINEER IN WRITING. THE ENGINEER DISCLAIMS ALL LIABILITY ASSOCIATED WITH THE REUSE, ALTERATION OR MODIFICATION OF THE CONTENTS HEREIN.